

GEMÜ 797

Manually operated high-pressure ball valve



Features

- Low maintenance and reliable spindle sealing
- Broad range of operating temperatures and pressures
- Choice of various body materials and connection types
- Lockable hand lever
- Suitable for vacuum applications
- Fire-safe design according to API 607 optionally available

Description

The GEMÜ 797 3-piece 2/2-way metal ball valve is manually operated. It has a plastic sleeved hand lever. The seat seal is made of PTFE. Due to a graphite reinforced body seal, the GEMÜ 797 ball valve is optionally also available as FireSafe version.

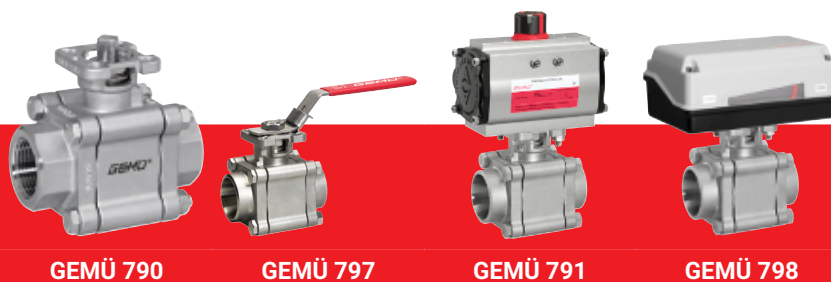
Technical specifications

- Media temperature: -20 to 180 °C
- Ambient temperature: -20 to 60 °C
- Operating pressure*: 0 to 137 bar
- Nominal sizes: DN 8 to 100
- Body configurations: 2/2-way body
- Connection types: Flange | Spigot | Threaded connection
- Connection standards: ASME | DIN | EN | ISO | NPT | SMS
- Body materials: 1.4408, investment casting material
- Seal materials: PTFE
- Conformities: | ATEX | FDA | TA Luft (German Clean Air Act)

* depending on version and/or operating parameters



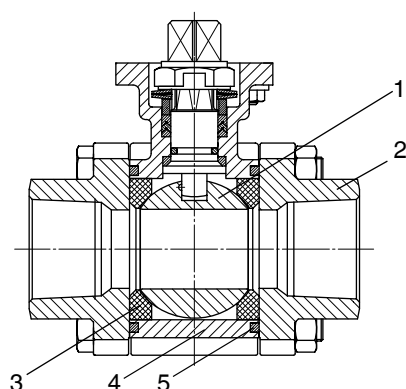
Product line



Operation				
With bare shaft	●	-	-	-
Manual	-	●	-	-
Pneumatic	-	-	●	-
Motorized	-	-	-	●
Nominal sizes	DN 8 to 100	DN 8 to 100	DN 8 to 100	DN 8 to 100
Media temperature	-20 to 180 °C	-20 to 180 °C	-20 to 180 °C	-20 to 180 °C
Operating pressure	0 to 137 bar	0 to 137 bar	0 to 137 bar	0 to 137 bar
Connection types				
Flange	●	●	●	●
Spigot	●	●	●	●
Threaded connection	●	●	●	●

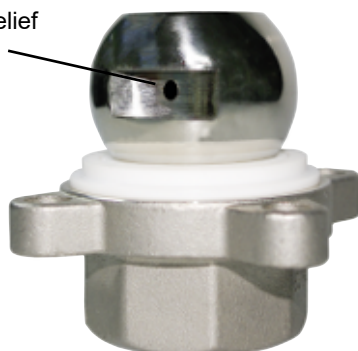
* depending on version and/or operating parameters

Product description



Item	Name	Materials
1	Ball	DN 8–15: SS316 DN 20–100: CF8M
2	Pipe connections	1.4408, investment casting material
3	Seal material	PTFE
4	Ball valve body	1.4408, investment casting material
5	Body seal material	PTFE, for fire-safe option PTFE carbon-filled

Pressure-relief
hole

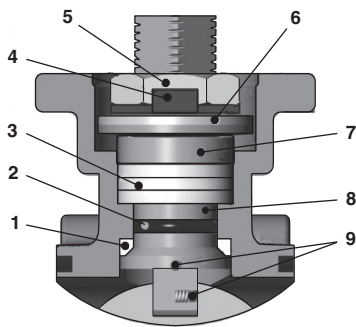


Control ball only for body configuration – full flow bore (code V)

Control ball	Code U	Code V	Code W

NOTE: The control ball cannot be retrofitted to standard 2/2-way bodies at a later date.

The spindle seal system



Item	Name	Material
1	Conical spindle seal	PTFE
2	O-ring	FPM
3	V-rings	PTFE
4	Lock washer secures the nut, thereby holding the valve spindle in position	1.4301
5	Spindle nut	1.4301
6	Spring washer	1.4310
7	Stainless steel sleeve	1.4301
8	Valve spindle The machined spindle surface reduces the friction at the spindle, reduces the actuation forces (torque) and minimizes wear.	1.4401
9	Antistatic device (spindle ball)	1.4401

Long service life due to triple spindle seal, TA-Luft compliant

- Conical spindle seal:

The seal 1 arranged at an angle of 45° effectively prevents the leakage of media when operating the spindle

- O-ring:

Stabilising spindle seal 2 with low wear and long service life

- Pretensioned self-adjusting spindle seal:

The spindle packing consists of several V-rings 3, a spring washer 6 and a stainless steel sleeve 7. The spring washer 6 is pretensioned via the spindle nut 5. The pretension force is distributed to the V-rings 3 via the stainless steel sleeve 7, thereby preventing the leakage of media. The pretension provides low maintenance and reliable spindle sealing even after a long service life.

GEMÜ CONEXO

The interaction of valve components that are equipped with RFID chips and an associated IT infrastructure actively increase process reliability.



Thanks to serialization, every valve and every relevant valve component such as the body, actuator or diaphragm, and even automation components, can be clearly traced and read using the CONEXO pen RFID reader. The CONEXO app, which can be installed on mobile devices, not only facilitates and improves the "installation qualification" process, but also makes the maintenance process much more transparent and easier to document. The app actively guides the maintenance technician through the maintenance schedule and directly provides him with all the information assigned to the valve, such as test reports, testing documentation and maintenance histories. The CONEXO portal acts as a central element, helping to collect, manage and process all data.

For further information on GEMÜ CONEXO please visit:

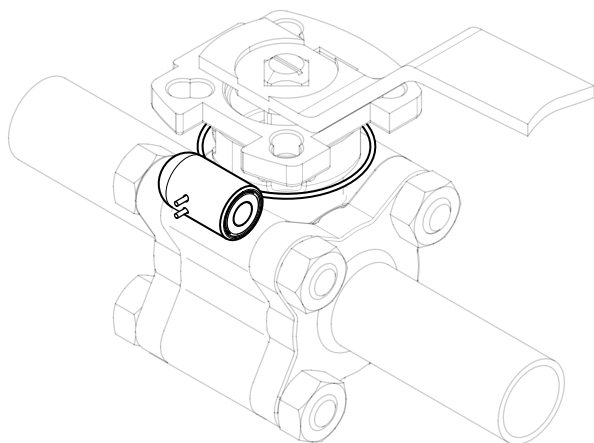
www.gemu-group.com/conexo

Ordering

GEMÜ Conexo must be ordered separately with the ordering option "CONEXO" (see order data).

Installing the RFID chip

In the corresponding design with CONEXO, this product has an RFID chip (1) for electronic recognition. The position of the RFID chip can be seen below.



Availability

DN	NPS	Connection code ¹⁾												
		1	31	2A	19	59	60	8	11	1	31	2A	19	37
		Body configuration code ²⁾												
V										R				
8	1/4"	X	X	X	X	-	-	-	-	-	-	-	-	-
10	3/8"	X	X	X	X	-	X	-	-	-	-	-	-	-
15	1/2"	X	X	X	X	X	X	X	X	X	X	X	X	X
20	3/4"	X	X	X	X	X	X	X	X	X	X	X	X	X
25	1"	X	X	X	X	X	X	X	X	X	X	X	X	X
32	1¼"	X	X	X	X	X	X	X	X	X	X	X	X	X
40	1½"	X	X	X	X	X	X	X	X	X	X	X	X	X
50	2"	X	X	X	X	X	X	X	X	X	X	X	X	X
65	2½"	X	X	X	X	X	X	X	X	X	X	X	X	X
80	3"	X	X	-	X	X	X	X	X	X	X	-	X	X
100	4"	X	X	-	X	X	X	X	X	X	X	-	X	X

Assignment pressure rating

DN	NPS	Full flow bore (code V)	Reduced flow bore (code R)
8	1/4"	PN 125	-
10	3/8"	PN 125	-
15	1/2"	PN 125	PN 125
20	3/4"	PN 125	PN 125
25	1"	PN 125	PN 125
32	1¼"	PN 100	PN 125
40	1½"	PN 100	PN 100
50	2"	PN 100	PN 100
65	2½"	PN 63	PN 100
80	3"	PN 63	PN 63
100	4"	PN 63	PN 63

1) Connection type

Code 1: Threaded socket DIN ISO 228

Code 31: Threaded socket NPT

Code 8: Flange EN 1092, PN 16, form B, face-to-face dimension FTF EN 558 series 1, ISO 5752, basic series 1

Code 11: Flange EN 1092, PN 40, form B, face-to-face dimension FTF EN 558 series 1, ISO 5752, basic series 1

Code 19: Spigot DIN EN 12627

Code 37: Spigot SMS 3008

Code 59: Spigot ASME BPE

Code 60: Spigot ISO 1127 / EN 10357 series C

Code 2 A: Socket weld DIN EN 12760

2) Body configuration

Code V: 2/2-way body, full flow bore

Code R: 2/2-way body, reduced flow bore

Application

Full flow bore:

- Reduction of pressure losses

Reduced flow bore:

- Reduction of frictional resistances
- Increase of flow velocity in and after the ball valve
- Increase of thorough mixing in the ball valve
- Reduction of torques by approx. 20%
- Higher pressure rating per nominal size possible

Order data

The order data provide an overview of standard configurations.

Please check the availability before ordering. Other configurations available on request.

Order codes

1 Type	Code	4 Connection type	Code
Ball valve, metal, manually operated	797	Flange EN 1092, PN 16, form B, face-to-face dimension FTF EN 558 series 1, ISO 5752, basic series 1	8
		Flange EN 1092, PN 40, form B, face-to-face dimension FTF EN 558 series 1, ISO 5752, basic series 1	11
2 DN	Code	5 Ball valve material	Code
DN 8	8	Body 1.4408 (CF8M), ball SS316 for DN 8 - DN 15, ball CF8M for DN 20 - DN 100	37
DN 10	10	ASTM A216 WCB, cast steel	31
DN 15	15	6 Seal material	Code
DN 20	20	PTFE, maximum -20 °C to +180 °C	5
DN 25	25	PTFE, FIRE SAFE, maximum -20 °C to +180 °C	TI
DN 32	32	7 Ball configur./port position	Code
DN 40	40	Without	
DN 50	50	V ball 30°	U
DN 65	65	V ball 60°	V
DN 80	80	V ball 90°	W
DN 100	100	8 Control function	Code
3 Body configuration	Code	Manually operated, hand lever, lockable	L
2/2-way body, full flow bore	V	9 CONEXO	Code
2/2-way body, reduced flow bore	R	without	
4 Connection type	Code	Integrated RFID chip for electronic identification and traceability	C
Threaded socket DIN ISO 228	1		
Threaded socket NPT	31		
Socket weld DIN EN 12760	2 A		
Spigot DIN EN 12627	19		
Spigot SMS 3008	37		
Spigot ASME BPE	59		
Spigot ISO 1127 / EN 10357 series C	60		

Order example

Order option	Code	Description
1 Type	797	Ball valve, metal, manually operated
2 DN	50	DN 50
3 Body configuration	R	2/2-way body, reduced flow bore
4 Connection type	1	Threaded socket DIN ISO 228
5 Ball valve material	37	Body 1.4408 (CF8M), ball SS316 for DN 8 - DN 15, ball CF8M for DN 20 - DN 100
6 Seal material	5	PTFE, maximum -20 °C to +180 °C
7 Ball configur./port position		Without
8 Control function	L	Manually operated, hand lever, lockable
9 CONEXO		without

Technical data

Medium

Working medium: Corrosive, inert, gaseous and liquid media and steam which have no negative impact on the physical and chemical properties of the body and seal material.

Temperature

Media temperature: -20 to 180 °C

Ambient temperature: -20 to 60 °C
Higher temperatures on request

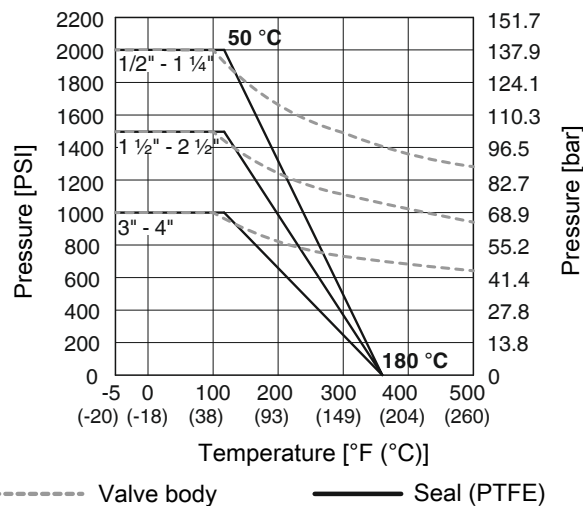
Storage temperature: 0 to 40 °C

Pressure

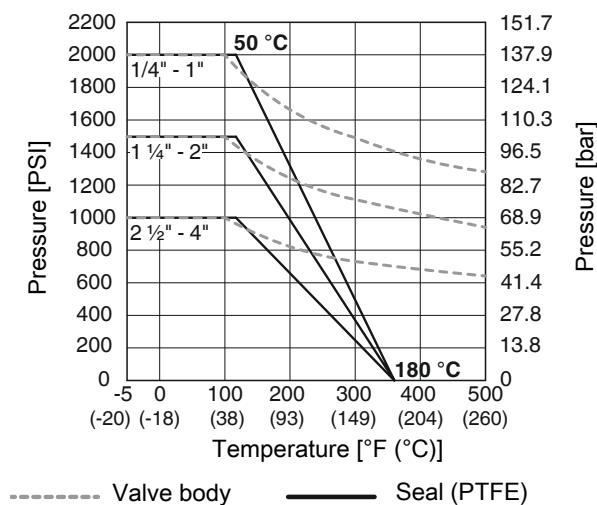
Operating pressure: 0 to 137 bar
The product must not be exposed to pressure fluctuations. If the product is to be used with pressure fluctuations, please contact GEMÜ.

Pressure/temperature diagram:

Reduced flow bore (code R)



Full flow bore (code V)



Leakage rate: Leakage rate according to ANSI FCI70 – B16.104

Leakage rate: Leakage rate according to EN12266, 6 bar air, leakage rate A

Kv values:

DN	NPS	Body configuration	
		Full flow bore (code V)	Reduced flow bore (code R)
8	1/4"	7	-
10	3/8"	7	-
15	1/2"	13	7
20	3/4"	29	13
25	1"	48	29
32	1¼"	73	48
40	1½"	108	73
50	2"	215	108
65	2½"	275	215
80	3"	499	275
100	4"	877	499

Kv values in m³/h

V-ball 30° (code U)

DN	NPS	Opening angle										
		0	15%	20%	30%	40%	50%	60%	70%	80%	90%	100%
8	1/4"	0	0.019	0.044	0.088	0.151	0.232	0.327	0.446	0.576	0.727	0.885
10	3/8"	0	0.021	0.05	0.1	0.172	0.265	0.374	0.51	0.659	0.83	1.012
15	1/2"	0	0.085	0.085	0.17	0.255	0.425	0.68	0.935	1.36	1.87	2.21
20	3/4"	0	0.085	0.17	0.425	0.595	0.935	1.53	2.04	2.805	3.825	4.59
25	1"	0	0.085	0.255	0.68	1.105	1.955	2.975	4.335	8.33	7.225	8.5
32	1¼"	0	0.17	0.34	0.935	1.7	3.145	4.675	6.8	8.5	11.05	12.75
40	1½"	0	0.255	0.51	1.36	2.55	4.25	6.375	9.35	11.9	14.45	17
50	2"	0	0.34	1.02	3.23	5.1	8.5	12.75	19.55	26.35	36.55	51
65	2½"	0	0.34	0.85	3.4	6.8	10.2	15.3	23.8	31.45	52.7	63.75
80	3"	0	0.425	1.02	3.4	6.8	11.9	19.55	28.05	39.1	55.25	69.7
100	4"	0	0.51	1.7	5.1	12.75	24.65	40.8	60.35	85	110.5	135.2

Kv values in m³/h

Kv values:

V-ball 60° (code V)

DN	NPS	Opening angle										
		0	15%	20%	30%	40%	50%	60%	70%	80%	90%	100%
8	1/4"	0	0.026	0.06	0.141	0.249	0.372	0.539	0.762	1.034	1.38	1.845
10	3/8"	0	0.03	0.068	0.161	0.285	0.425	0.616	0.871	1.182	1.577	2.108
15	1/2"	0	0.085	0.085	0.255	0.425	0.765	1.19	1.7	2.805	3.74	5.1
20	3/4"	0	0.085	0.17	0.595	0.85	1.445	2.38	3.4	5.525	7.65	10.2
25	1"	0	0.17	0.34	0.935	1.53	2.89	4.505	6.715	10.46	13.01	17.85
32	1¼"	0	0.17	0.51	1.53	2.55	4.675	8.075	10.88	16.15	22.1	33.15
40	1½"	0	0.34	0.68	2.125	3.4	6.8	11.05	16.15	22.95	34	44.2
50	2"	0	0.34	1.275	3.91	7.65	14.03	22.95	33.15	46.75	70.55	93.5
65	2½"	0	0.34	1.275	4.25	8.5	17.85	28.9	45.05	63.75	87.55	127.5
80	3"	0	0.425	2.125	5.1	11.9	21.25	34	55.25	77.35	108.8	140.3
100	4"	0	0.595	2.55	9.35	21.25	34	50.15	76.5	119.9	180.2	302.6

Kv values in m³/h

V-ball 90° (code W)

DN	NPS	Opening angle										
		0	15%	20%	30%	40%	50%	60%	70%	80%	90%	100%
8	1/4"	0	0.037	0.086	0.212	0.39	0.658	1.008	1.391	1.837	2.332	3.012
10	3/8"	0	0.043	0.098	0.242	0.446	0.752	1.152	1.59	2.1	2.665	3.443
15	1/2"	0	0.085	0.17	0.34	0.51	0.765	1.275	1.87	3.23	4.59	5.865
20	3/4"	0	0.17	0.34	0.68	1.02	1.7	2.635	3.91	6.8	9.605	11.9
25	1"	0	0.17	0.51	1.53	2.89	4.335	6.885	9.69	13.6	17.85	24.65
32	1¼"	0	0.255	0.68	1.7	4.25	6.8	11.9	16.15	23.8	33.15	46.75
40	1½"	0	0.425	0.765	2.975	5.95	11.05	17	26.35	35.7	53.55	66.3
50	2"	0	0.595	1.7	5.1	10.2	18.7	29.75	38.25	59.5	89.25	114.8
65	2½"	0	0.425	1.445	5.95	11.9	23.8	40.8	59.5	90.1	136	185.3
80	3"	0	0.595	2.975	6.8	15.3	29.75	51	76.5	114.8	174.3	263.5
100	4"	0	0.85	2.975	13.6	34	63.75	106.3	161.5	250.8	375.7	569.5

Kv values in m³/h

Mechanical data

Torques:

DN	NPS	Body configuration	
		Full flow bore (code V)	Reduced flow bore (code R)
8	1/4"	8	-
10	3/8"	8	-
15	1/2"	8	8
20	3/4"	10	8
25	1"	16	10
32	1¼"	23	16
40	1½"	33	23
50	2"	47	33
65	2½"	62	47
80	3"	101	62

Torques:

DN	NPS	Body configuration	
		Full flow bore (code V)	Reduced flow bore (code R)
100	4"	124	101

Torques in Nm

Weight:

DN	NPS	Ball valve body					Hand lever
		Connection type code ¹⁾					
		1, 19, 31, 37, 59, 60		2A		8, 11	
		Body configuration code ²⁾					
		V	R	V	R	V	
8	1/4"	0.89	-	0.89	-	-	0.140
10	3/8"	0.88	-	0.88	-	-	0.140
15	1/2"	0.82	0.83	0.82	0.83	1.39	0.140
20	3/4"	1.29	0.84	1.29	0.84	2.52	0.140
25	1"	2.01	1.50	2.01	1.50	4.47	0.200
32	1 1/4"	2.76	2.17	2.76	2.17	6.44	0.200
40	1 1/2"	4.21	4.27	4.21	4.27	8.30	0.372
50	2"	6.90	5.30	6.90	5.30	11.80	0.372
65	2 1/2"	12.0	6.51	12.0	6.51	20.11	0.716
80	3"	16.2	12.0	-	-	26.48	0.874
100	4"	25.8	16.2	-	-	38.95	0.874

Weights in kg

1) **Connection type**

Code 1: Threaded socket DIN ISO 228

Code 31: Threaded socket NPT

Code 8: Flange EN 1092, PN 16, form B, face-to-face dimension FTF EN 558 series 1, ISO 5752, basic series 1

Code 11: Flange EN 1092, PN 40, form B, face-to-face dimension FTF EN 558 series 1, ISO 5752, basic series 1

Code 19: Spigot DIN EN 12627

Code 37: Spigot SMS 3008

Code 59: Spigot ASME BPE

Code 60: Spigot ISO 1127 / EN 10357 series C

Code 2 A: Socket weld DIN EN 12760

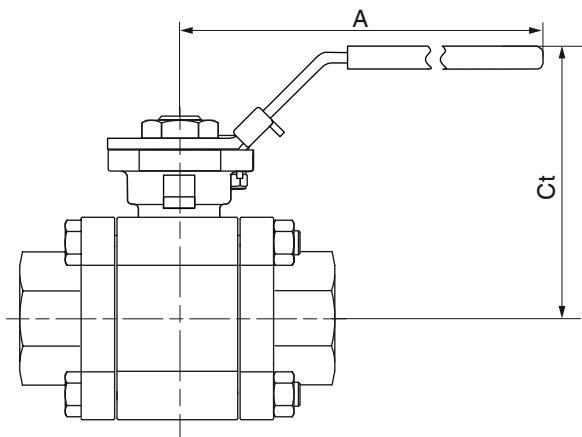
2) **Body configuration**

Code V: 2/2-way body, full flow bore

Code R: 2/2-way body, reduced flow bore

Dimensions

Hand lever



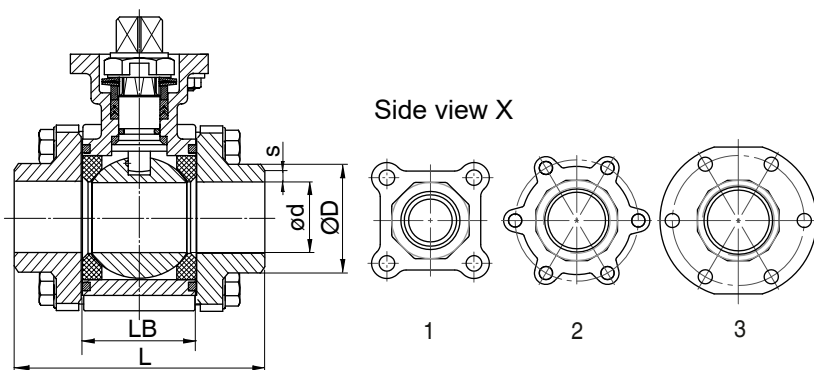
DN	NPS	A	Body configuration ¹⁾	
			Code V	Code R
			Ct	
8	1/4"	139	77	-
10	3/8"	139	77	-
15	1/2"	139	77	77
20	3/4"	139	83	77
25	1"	165	96	83
32	1 1/4"	165	100	96
40	1 1/2"	215	127	100
50	2"	215	134	127

Dimensions in mm

1) **Body configuration**

Code V: 2/2-way body, full flow bore

Code R: 2/2-way body, reduced flow bore

Spigot DIN EN 12627 (code 19)**2/2-way body, full flow bore (code V)**

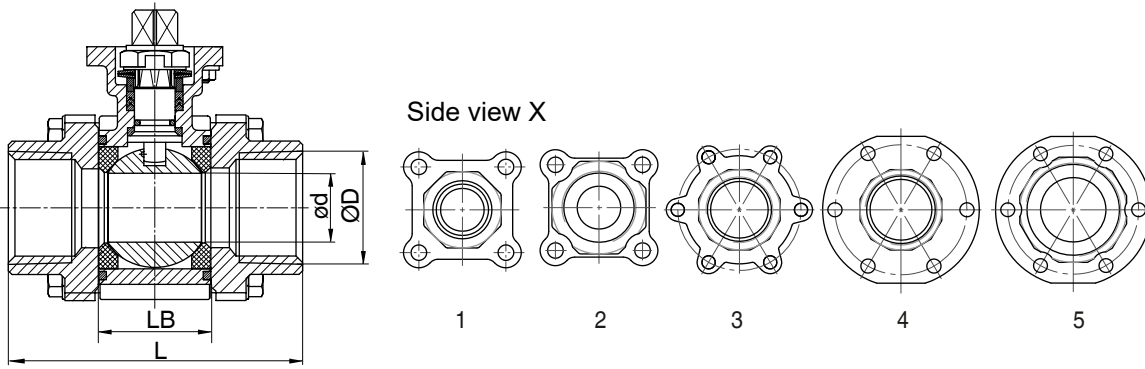
DN	NPS	L	LB	ød	øD	s	X
8	1/4"	75	24.5	11.5	21.7	1.6	1
10	3/8"	75	24.5	12.6	21.7	1.6	1
15	1/2"	75	24.5	15	21.7	1.6	1
20	3/4"	90	31.4	20	27.2	1.6	1
25	1"	110	41.3	25	34	1.6	1
32	1¼"	115	48.4	32	42.7	1.6	1
40	1½"	130	56.3	38	48.6	1.6	1
50	2"	143	71.4	50	60.5	1.6	2
65	2½"	185	86.6	65	76.3	2	2
80	3"	205	99	80	90	2	2
100	4"	240	127	100	116	2	2

2/2-way body, reduced flow bore (code R)

DN	NPS	L	LB	ød	øD	s	X
15	1/2"	75	24.5	12.6	21.7	1.6	1
20	3/4"	75	24.5	15	27.2	1.6	1
25	1"	90	31.4	20	34	1.6	1
32	1¼"	110	41.3	25	42.7	1.6	1
40	1½"	115	48.4	32	48.6	1.6	1
50	2"	130	56.3	38	60.5	1.6	1
65	2½"	145	71.4	50	76.3	2	3
80	3"	185	86.6	65	90	2	3
100	4"	205	99	80	116	2	3

Dimensions in mm

Threaded socket DIN ISO 228 (code 1) and NPT (code 31)



2/2-way body, full flow bore (code V)

DN	NPS	Connection code ¹⁾					
		1	31	1, 31			
		ØD		L	LB	ød	X
8	1/4"	G 1/4	1/4" NPT	75	24.5	11.5	1
10	3/8"	G 3/8	3/8" NPT	75	24.5	12.6	1
15	1/2"	G 1/2	1/2" NPT	72.5	24.5	15	1
20	3/4"	G 3/4	3/4" NPT	85.4	31.4	20	1
25	1"	G 1	1" NPT	105.3	41.3	25	1
32	1 1/4"	G 1 1/4	1 1/4" NPT	111	48.4	32	1
40	1 1/2"	G 1 1/2	1 1/2" NPT	127.3	56.3	38	1
50	2"	G 2	2" NPT	144	71.4	50	3
65	2 1/2"	G 2 1/2	2 1/2" NPT	185	86.6	65	3
80	3"	G 3	3" NPT	205	99	80	3
100	4"	G 4	4" NPT	240	127	100	3

2/2-way body, reduced flow bore (code R)

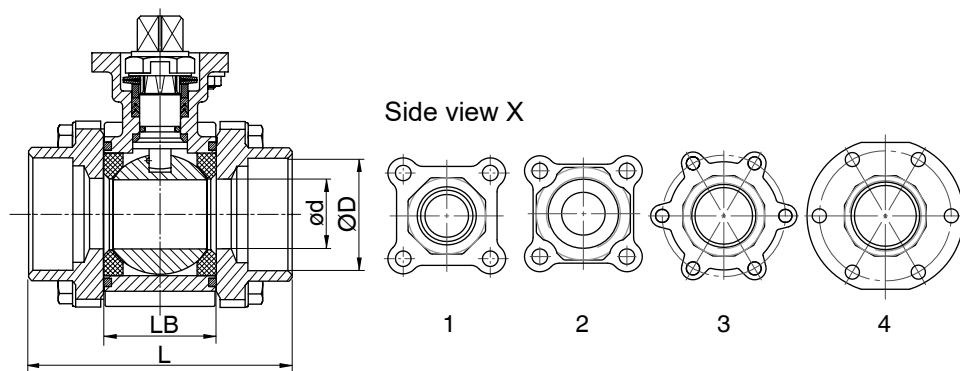
DN	NPS	Connection code ¹⁾					
		1	31	1, 31			
		ØD		L	LB	ød	X
15	1/2"	G 1/2	1/2" NPT	75	24.5	12.6	1
20	3/4"	G 3/4	3/4" NPT	72.5	24.5	15	1
25	1"	G 1	1" NPT	85.4	31.4	20	2
32	1 1/4"	G 1 1/4	1 1/4" NPT	105.3	41.3	25	2
40	1 1/2"	G 1 1/2	1 1/2" NPT	111	48.4	32	2
50	2"	G 2	2" NPT	127.3	56.3	38	2
65	2 1/2"	G 2 1/2	2 1/2" NPT	144	71.4	50	4
80	3"	G 3	3" NPT	185	86.6	65	4
100	4"	G 4	4" NPT	205	99	80	5

Dimensions in mm

1) **Connection type**

Code 1: Threaded socket DIN ISO 228

Code 31: Threaded socket NPT

Socket weld DIN 12760 (code 2A)**2/2-way body, full flow bore (code V)**

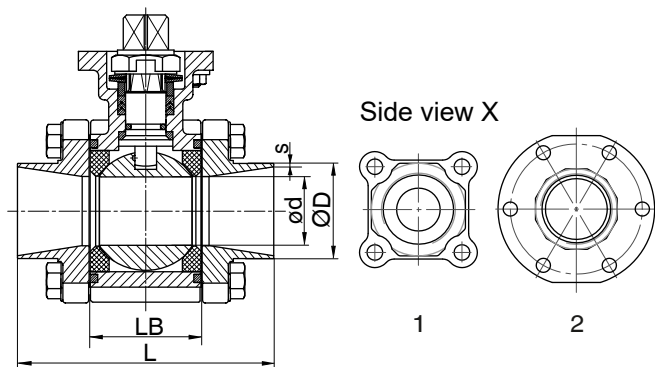
DN	NPS	L	LB	ød	ØD	X
8	1/4"	75	24.5	11.5	14.3	1
10	3/8"	75	24.5	12.6	17.6	1
15	1/2"	72.5	24.5	15	21.9	1
20	3/4"	85.4	31.4	20	27.3	1
25	1"	105.3	41.3	25	33.9	1
32	1¼"	111	48.4	32	42.8	1
40	1½"	127.3	56.3	38	48.9	1
50	2"	144	71.4	50	61.3	3
65	2½"	185	86.6	65	72.7	3

2/2-way body, reduced flow bore (code R)

DN	NPS	L	LB	ød	ØD	X
15	1/2"	75	24.5	12.6	21.9	1
20	3/4"	72.5	24.5	15	27.3	1
25	1"	85.4	31.4	20	33.9	2
32	1¼"	105.3	41.3	25	42.8	2
40	1½"	111	48.4	32	48.9	2
50	2"	127.3	56.3	38	61.3	2
65	2½"	144	71.4	50	72.7	4

Dimensions in mm

Spigot SMS 3008 (code 37)

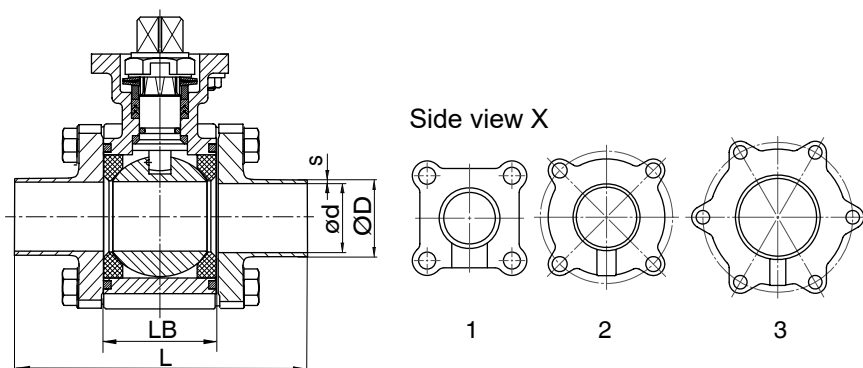


2/2-way body, reduced flow bore (code R)

DN	NPS	LB	L	ød	øD	s	X
15	1/2"	24.5	75.0	12.6	18.0	1.0	1
20	3/4"	31.4	81.7	15	25.0	1.2	1
25	1"	41.3	99.7	20	32.0	1.2	1
32	1¼"	48.4	116.5	25	33.7	1.2	1
40	1½"	56.3	122.3	32	38.0	1.2	1
50	2"	71.4	145.1	38	51.0	1.2	2
65	2½"	86.6	160.2	50	63.5	1.6	2
80	3"	99.0	197.4	65	76.1	1.6	2
100	4"	127.0	233.0	80	101.6	2.0	2

Dimensions in mm

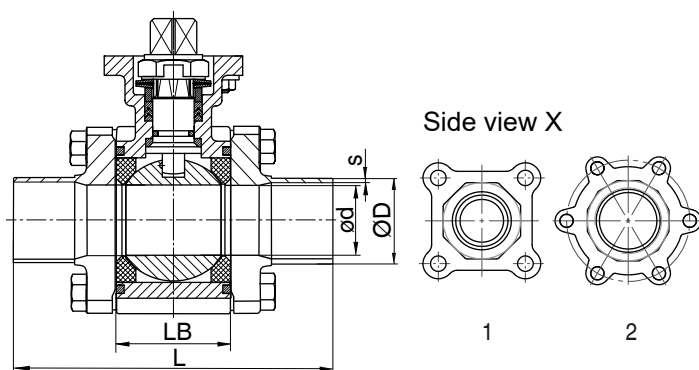
Spigot ASME BPE (code 59)



2/2-way body, full flow bore (code V)

DN	NPS	LB	L	ød	øD	s	X
15	1/2"	24.5	134.5	9.4	12.7	2.1	1
20	3/4"	31.4	140.9	15.8	19.0	2.1	1
25	1"	41.3	161.5	22.2	25.4	2.3	1
40	1½"	56.3	182.2	34.9	38.1	2.5	1
50	2"	71.4	191.7	47.5	50.8	3.0	1
65	2½"	86.6	247.6	60.3	63.5	3.5	2
80	3"	99.0	266.8	73.0	76.2	3.5	2
100	4"	127.0	317.6	97.4	101.6	3.5	3

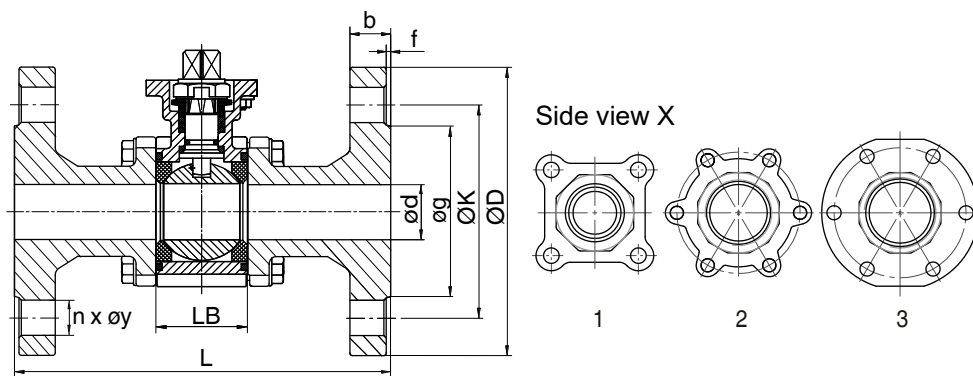
Dimensions in mm

Spigot EN ISO 1127 (code 60)**2/2-way body, full flow bore (code V)**

DN	NPS	LB	L	ød	øD	s	X
10	3/8"	24.5	120	12.7	17.2	2.1	1
15	1/2"	24.5	140	15.0	21.3	2.1	1
20	3/4"	31.4	140	20.0	26.9	2.1	1
25	1"	41.3	152	25.0	33.7	2.3	1
32	1¼"	48.4	165	32.0	42.4	2.5	1
40	1½"	56.3	190	38.0	48.3	2.5	1
50	2"	71.4	203	50.0	60.3	3.0	1
65	2½"	86.6	254	65.0	76.1	3.5	2
80	3"	99.0	280	80.0	88.9	3.5	2
100	4"	127.0	317	100.0	114.3	3.5	2

Dimensions in mm

Flange EN 1092 PN 16 (code 8)

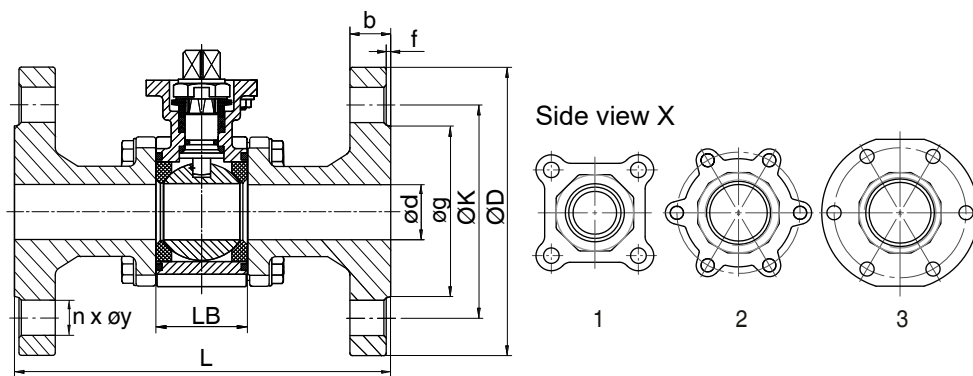


2/2-way body, full flow bore (code V)

DN	NPS	LB	L	ød	øD	øg	øK	f	b	øy	n	X
5	1/2"	24.5	130	15	95	45	65	2	16	14	4	3
20	3/4"	31.4	150	20	105	58	75	2	18	14	4	3
25	1"	41.3	160	25	115	68	85	2	18	14	4	3
32	1¼"	48.4	180	32	140	78	100	2	18	18	4	3
40	1½"	56.3	200	40	150	88	110	3	18	18	4	3
50	2"	71.4	230	50	165	102	125	3	20	18	4	3
65	2½"	86.6	290	65	185	122	145	3	18	18	4	3
80	3"	99	310	80	200	138	160	3	20	18	8	3
100	4"	127	350	100	220	158	180	3	20	18	8	3

Dimensions in mm

Flange EN 1092 PN 40 (code 11)



2/2-way body, full flow bore (code V)

DN	NPS	LB	L	ød	øD	øg	øK	f	b	øy	n	X
5	1/2"	24.5	130	15	95	45	65	2	16	14	4	1
20	3/4"	31.4	150	20	105	58	75	2	18	14	4	1
25	1"	41.3	160	25	115	68	85	2	18	14	4	1
32	1¼"	48.4	180	32	140	78	100	2	18	18	4	1
40	1½"	56.3	200	40	150	88	110	3	18	18	4	1
50	2"	71.4	230	50	165	102	125	3	20	18	4	2
65	2½"	86.6	290	65	185	122	145	3	22	18	8	3
80	3"	99	310	80	200	138	160	3	24	18	8	3
100	4"	127	350	100	235	162	190	3	24	22	8	3

Dimensions in mm

Accessories



GEMÜ LSF

Inductive dual sensor for quarter turn valves

The GEMÜ LSF inductive dual sensor is suitable for installation on manually and pneumatically operated quarter turn valves. Using the optical indication, the position of the valve can be reliably detected and indicated accordingly.

Ordering information

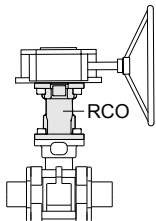
Nominal size	Item no.	Designation
DN 8 to 20	88470175	LSFS01Z BV F04
DN 25 to 32	88470177	LSFS01Z BV F05
DN 40 to 50	88470178	LSFS01Z BV F07
DN 65 to 100	88470181	LSFS01Z BV F10



GEMÜ LSC

Limit switch box for quarter turn actuators

The GEMÜ LSC limit switch box is suitable for installation on manually and pneumatically operated quarter turn valves. Using the optical indication, the position of the valve can be reliably detected and indicated accordingly.



GEMÜ RC0

Shaft extension

GEMÜ RC0 is a shaft extension for quarter turn valves. Available for various flange types and shaft connections.

Ordering information

Nominal size	Article no.	Designation
DN 8 to 20	88337036	RCOAF04 009KF04 D09 61
DN 25 to 32	88326376	RCOAF05 011 KF05 D11 67
DN 40 to 50	88337034	RCOAF07 014KF07 D14 86
DN 65 to 100	88338623	RCOAF10 017KF10 D17105



GEMÜ Gebr. Müller Apparatebau GmbH & Co. KG
Fritz-Müller-Straße 6-8, 74653 Ingelfingen-Criesbach,
Germany
Phone +49 (0)7940 123-0 · info@gemue.de
www.gemu-group.com